

Adept.
Experience

Adept Customer Panel

Scott Lamond, Vice President, Marketing and Partnerships, Synergis Software

Synergis Software

Adept Customer Panel



Karyn Dawes
Configuration Manager
Fluid Components Int'l



Bob Burke
Section Manager
Con Edison



Brian Cranston
Eng. Technology Coordinator
LSI Industries



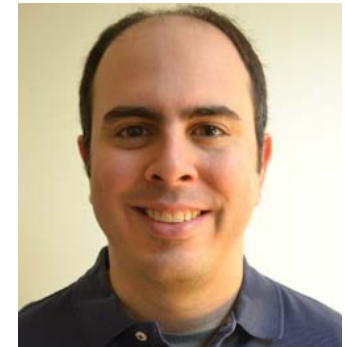
Kevin Klinger
Sr. Application Engineer
Intest Corporation



Ryan Mongeau
Director of Technology
Space Age Electronics



Gregg Schuler
Global Manager, Engineering Information
Dow Chemical



Dave Ruddock,
PDM Administrator
Nat'l Superconducting Cyclotron Lab



Karyn Dawes

Configuration Manager
Fluid Components Int'l

What we do: Design & manufacture thermal mass flow meters, flow switches and level switches

Adeptified since: 2006 (12 years)

Adept Users: 167

Products: Desktop, Explorer, PublishWave

Out of Box or Custom: 2 Custom Workflows

Managing: Primarily engineering/production documentation

Remote Locations: CA

CAD Software: AutoCAD and SolidWorks



Bob Burke

Section Manager

Central Engineering Group

Con Edison

What we do: Provide electric, gas, and steam to New York City (all 5 boroughs) and Westchester, NY

Adeptified since: 2017 (1 year)

Adept Users: 2,317

Products: Desktop, Reviewer, Explorer, Vault Replication, PublishWave, Integrator

Out of Box or Custom: Out of Box

Managing: Engineering drawings

Remote Locations: All 5 boroughs of NYC and Westchester

CAD Software: AutoCAD, AutoCAD Raster Design, Inventor



Brian Cranston

Eng. Technology Coordinator
LSI Industries

What we do: Help partners develop superior image solutions through our world-class lighting, graphics, and technology capabilities

Adeptified since: 2015 (3 Years)

Adept Users: 125

Products: Desktop, Reviewer, Explorer, PublishWave, Vault Replication

Out of Box or Custom: Out of the Box

Managing: Product design data & related project information.

Locations: Ohio, Kentucky, California, New York, North Carolina, Rhode Island and Texas

CAD Software: Primarily Inventor, legacy SolidWorks & AutoCAD



Kevin Klinger

Sr. Application Engineer
Intest Corporation

What we do: Design & manufacturer test head manipulators, docking equipment & electrical interfaces for semiconductor industry

Adeptified since: 1998 (20 years: 14 Adept, 6 NFM)

Adept Users: 35

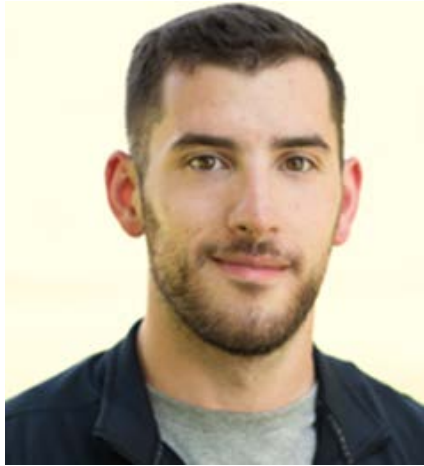
Products: Desktop

Out of Box or Custom: Out of the Box

Managing: Product Data

Locations: NJ and CA

CAD Software: SolidWorks 2017



Ryan Mongeau
Director of Technology
Space Age Electronics

What we do: Life safety equipment manufacturing

Adeptified since: 2016 (2 years)

Adept Users: 60

Products: Desktop, Reviewer, Explorer, PublishWave

Out of Box or Custom: Out of the Box

Managing: Everything

Remote Locations: Worldwide

CAD Software: SolidWorks and AutoCAD



Gregg Schuler

Global Manager,
Engineering Information
Dow Chemical

What we do: World's largest chemical manufacturer

Adeptified since: 2011 (7 years)

Adept Users: 5,000+ in 2 systems; soon 10,000+ in 4 systems

Products: Desktop, Explorer, Vault Replication

Out of Box or Custom: Customer-facing code is Synergis developed, internally developed tools manage AD group membership, metadata quality & mass data import

Managing: Capital project work-in-progress and deliverable documents, supplier documents, plant as-builts, best practices, capital estimating results, and capital project work process documents

Remote Locations: ~20 sites in Germany, The UK, The Netherlands, India, and all over the U.S.

CAD Software: Microstation and AutoCAD



Dave Ruddock,
PDM Administrator
Nat'l Superconducting
Cyclotron Lab

What we do: Nuclear Physics Research Facility

Adeptified since: 2010 (8 Years)

Adept Users: 175

Products: Desktop, Explorer, PublishWave

Out of Box or Custom: In-house developed custom programs

Managing: Primarily engineering data, some building & facilities data

Remote Locations: None

CAD Software: AutoCAD, AutoCAD Electrical, Revit, NavisWorks,
SolidWorks and MicroStation

Adept Customer Panel



Karyn Dawes
Configuration Manager
Fluid Components Int'l



Bob Burke
Section Manager
Con Edison



Brian Cranston
Eng. Technology Coordinator
LSI Industries



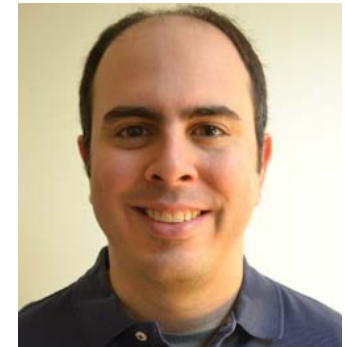
Kevin Klinger
Sr. Application Engineer
Intest Corporation



Ryan Mongeau
Director of Technology
Space Age Electronics



Gregg Schuler
Global Manager, Engineering Information
Dow Chemical



Dave Ruddock,
PDM Administrator
Nat'l Superconducting Cyclotron Lab